



**Larkspur Drive, Calne**  
**Price Guide £315,000**

2 The Square, Calne, Wiltshire, SN11 0BY  
01249 821110  
[calne@butfieldbreach.co.uk](mailto:calne@butfieldbreach.co.uk)  
[www.butfieldbreach.co.uk](http://www.butfieldbreach.co.uk)



- Three Bedroom Semi-Detached Home
- Driveway Parking
- Dining Kitchen
- En Suite to the Master Bedroom
- No Chain!
- Generous Rear Garden
- Large Living Room



### 30, Larkspur Drive

A fantastic three-bedroom semi-detached home is located on the sought-after High Penn Park development. Boasting an excellent size, private rear garden and driveway parking. Internally, the home features a modern dining kitchen with integrated appliances, a convenient ground floor cloakroom, and a generous living room with French doors leading directly onto the rear garden. Upstairs, there are three well-proportioned bedrooms, including a master with an en-suite, as well as a contemporary family bathroom.

Ideally located in a quiet and popular newly developed area, just a short walk from the Tesco Superstore and convenient bus stops.



## Location

The property is placed to the North of the centre of Calne in a residential estate developed in recent years. The development has numerous green spaces and is on the edge of a nature reserve and countryside, offering idyllic country walks.

## The Home

A semi-detached three-bedroom home with parking for two vehicles on a driveway at the front of the property. A gate gives access to the garden.

## Entrance Hall

On entering the home, a welcoming hallway with tiled flooring gives access to the kitchen, living dining room and guest cloakroom.

## Dining Kitchen

**14'3" x 9'11" (4.34m x 3.02m)**

This modern kitchen is fitted with sleek white matching wall and base cabinets, with under-counter lighting. The kitchen has a window to the front, allowing for plenty of natural light. A comprehensive suite of integrated appliances includes a mid-height oven, electric hob with extractor hood, fridge freezer, dishwasher, and a stainless steel one-and-a-half bowl sink with drainer. Thoughtfully designed for both cooking and entertaining, the kitchen also offers ample space to accommodate a dining table and chairs—ideal for everyday meals or casual gatherings.

## Living Room

**17'3" x 11'9" (5.26m x 3.58m)**

A generously proportioned living room positioned at the rear of the home, featuring large French doors that open onto the patio, perfect for extending the living space outdoors during warmer months. The room offers ample space for multiple sofas and additional display furniture. A convenient under-stairs storage cupboard includes a sensor light for ease of use. Finished with wood-effect hard flooring.

## Cloakroom

Downstairs WC with wash basin and tiled flooring.

## First Floor Landing

Doors open to all three bedrooms, the family bathroom and a handy storage cupboard. Loft access.

## Bedroom One

**10'11" x 10'8" max (3.33m x 3.25m max)**

The principal bedroom easily accommodates a king size bed, bedside tables, and further storage furniture. Doors lead to a wardrobe cupboard and the en-suite. A window looks out over the front of the home

## En suite

A modern en-suite consisting of a shower cubical, pedestal wash basin and a water closet. Chrome heated towel rail and a deep ledge window with privacy glass. Tiled finishings.

## Bedroom Two

**10'8" x 8'9" max (3.25m x 2.67m max)**

With a window looking out over the rear garden of the home, bedroom two can accommodate a double bed, bedside tables and further bedroom furniture.

## Bedroom Three

**10'10" x 6'11" (3.30m x 2.11m)**

A generous single bedroom with further space for storage furniture. This bedroom would also make a great study space or dressing room. A window opens out over the rear of the home.

## Family Bathroom

A matching suite consisting of a panel-enclosed bath with mixer taps over, a pedestal wash basin, and a water closet. Chrome heated towel rail, spot lighting, and tiled finishings. A privacy window opens to the side of the home.

## Outside

Outlined in further detail:

## Garden

A generous garden that backs onto fields, with accessible footpaths ideal for countryside walks. The

garden is fully enclosed with fencing and access via a gate. There is a large patio area ideal for alfresco furniture, leading to a raised grass area with a shed.

## Driveway

Private driveway parking for two to the side of the property.

## Calne

Calne is a market town steeped in history, with a rich heritage of traditional industries including textile production and Wiltshire ham. Calne is the birthplace of Joseph Priestley, the discoverer of oxygen, who conducted his experiments at nearby Bowood House. Idyllic countryside surrounds the town with brilliant walking routes and nearby villages with abundant traditional country pubs. While in the town, you'll find cafes, a microbrewery, and a variety of independent and high-street shops, supermarkets and eateries. There is a good selection of primary schools and a secondary school, Kingsbury Green Academy. There are GP and dental surgeries with three leisure centres with swimming pools, fitness suites, and health classes. There is also the ever-popular Calne Football, Rugby, Cricket and Tennis Clubs, as well as a great cycling and running community to name a few. To the east down the A4 you will pass Cherhill White Horse, Silbury Hill, Historic Avebury, and then onto Marlborough. To the west is Bowood, Chippenham, Bath and the M4 westbound. To the north is Royal Wootton Bassett and the M4 eastbound.

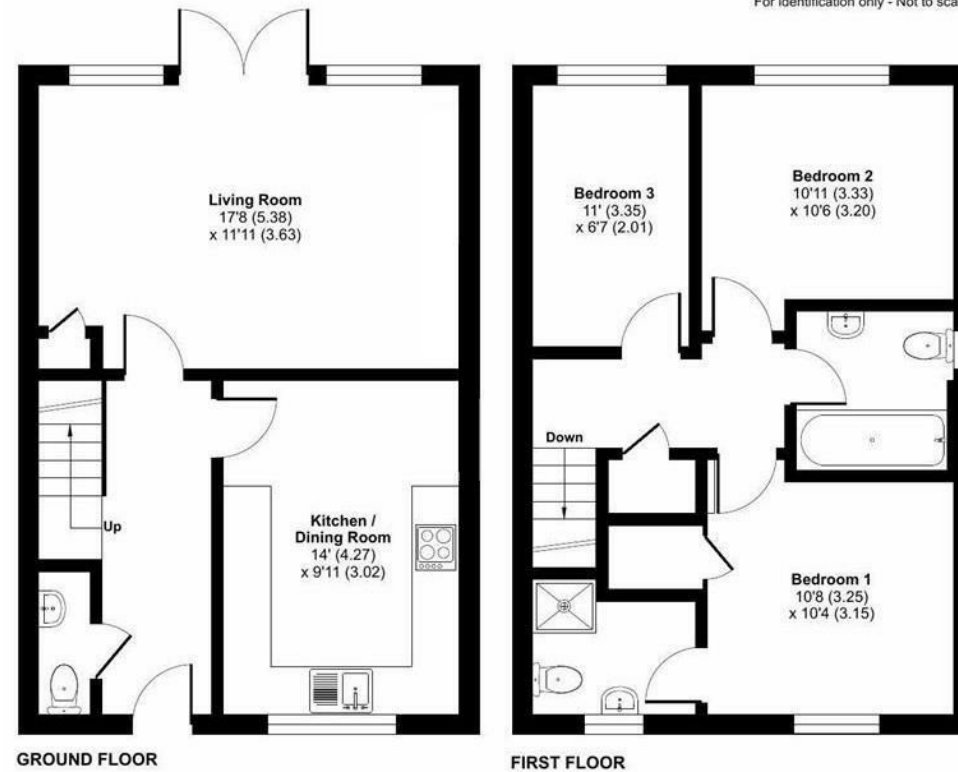






Approximate Area = 934 sq ft / 86.7 sq m

For identification only - Not to scale



Floor plan produced in accordance with RICS Property Measurement Standards incorporating International Property Measurement Standards (IPMS2 Residential). © nichecom 2023. Produced for Scott Windle Powered by eXp. REF: 968587

Directions: For exact location and details on how to view please contact Butfield Breach on 01249 821110

You may download, store and use the material for your own personal use and research. you may not republish, retransmit, redistribute or otherwise make the material available to an party or make the same available on any website, online service or bulletin board of your own or of any part or make the same available in hard copy or in any other media without the website owner's express prior written consent. The website owner's copyright must remain on all reproductions of material taken from this website.